

## INVERTED BIOLOGICAL MICROSCOPE



The **XDS-5** inverted microscope is multifunctional microscope. It adopts excellent infinity optics system and provides eximious optical function. It is designed with good-looking shape and convenience operation. The long working distance condenser system is suitable for tissue observation in a high culture dish. The illuminate system to well consider spreading heat and safety. It also accord with man-machine engineering. The phase contrast device can be attached to the light path to perform transmitted phase contrast microscopic observation. This unit is suitable for the microscopic observation of cells, tissues and clear liquid tissues, and the dynamic microscopic observation of tissues cultured in a culture dish, and is applicable to scientific research institutions, colleges and universities, medical and health, inspection and quarantine agencies, agricultural, animal husbandry and dairy industries.



### Observation system

The gemel mode binocular is inclined  $45^{\circ}$  degree. The field of plan objective can achieve  $\Phi 22$ , which let you have more wide and comfortable of observation. The trinocular can easily change in the observation and photography

### **Mechanical moving stage**

The disassembly type mechanical moving stage enable to fill the requirements that observe in the different culture dish.

Equip three kind of stage board.

Stage size: 224mm×208mm

Moving range: 112mm×79mm

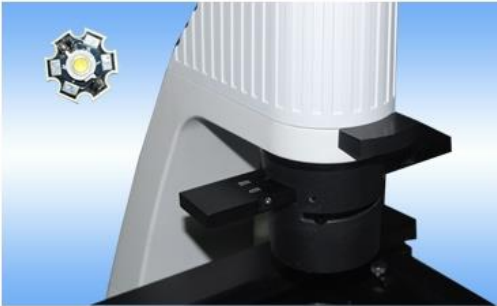


### **hand shank:**

Base on the human design, the microscope has the handshank in the back of it , because of the design, you can easily take up the microscope and move it.

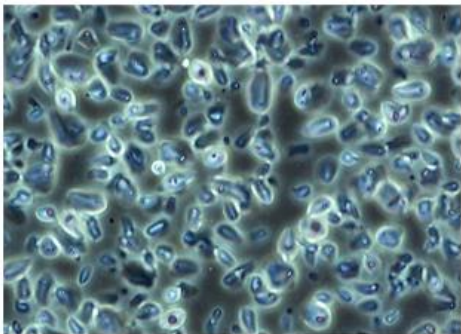
**Transmitted illumination system**

The illumination system with 9W LED (brightness adjustable) can provide clear and bright image for light field observation, but also for phase contract observation Ultra-long working distance condenser is suited for observation in a high culture dish.

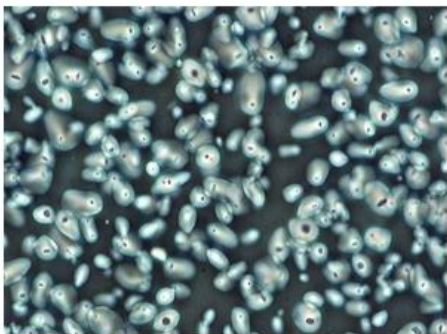


**Phase contrast observation**

Install the condenser into the condenser holder, according to phase contrast objective choose right phase contrast ring plate into the light path,the phase contrast effect will provide.it is suit for 10X, 20X, 40X phase contrast observation.



Positive phase contrast



Negative phase contrast

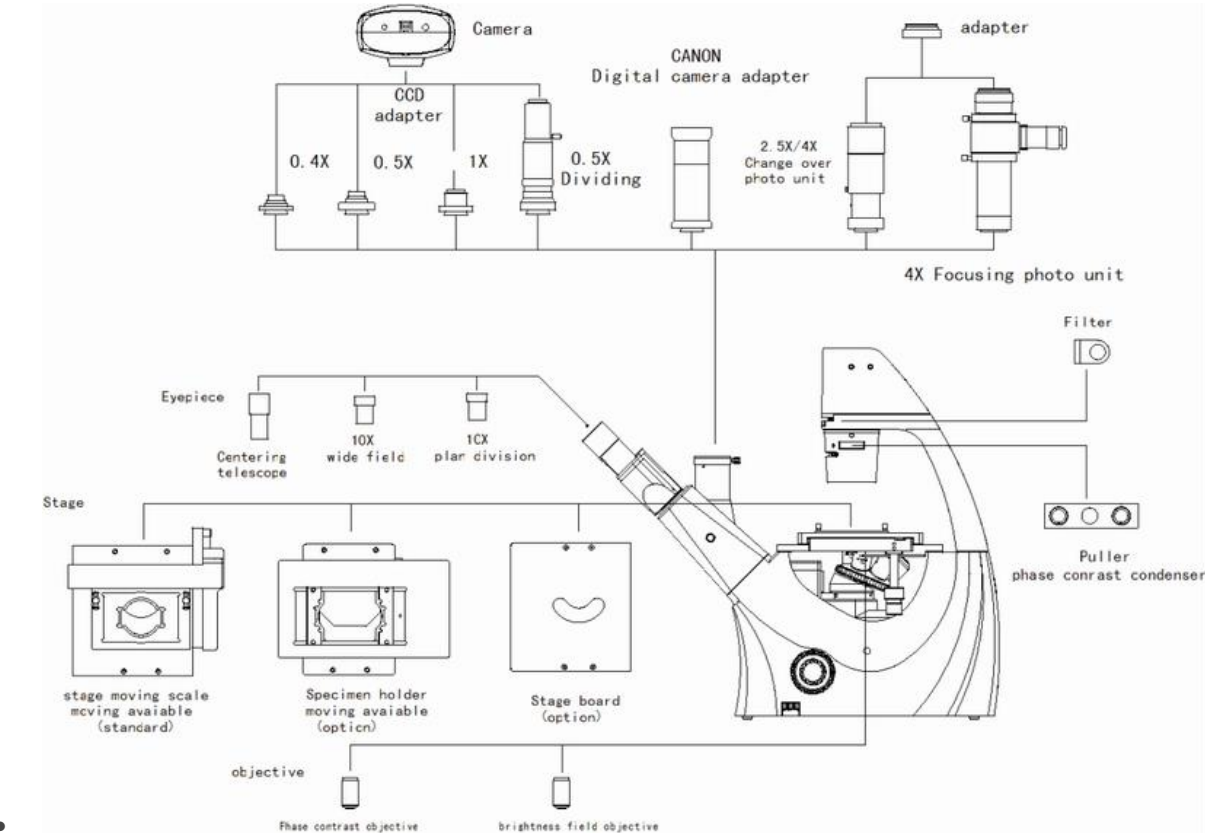
**Specification**

Main parameters	Total magnification	100X~400X(standard)
	Mechanical tube length	∞

	Conjugate distance of objective		∞			
Eyepiece	Wide-field eyepiece		WF 10X	field of view numberΦ22mm	Eyepiece interface Φ30mm	Parfocal distance 10mm
	Centering telescope					
Trinocular	Inclination 45°, interpupillary distance : 48 ~75mm .					
objective	magnification	N.A	Work disistance (mm)	Thickness of cover glass (mm)	Remarks	
	10X	0.25	4.27	1.2		
	20X	0.40	8.0	1.2		
	40X	0.60	3.5	1.2		
Phase-contrast objective	10X	0.25	4.27	1.2	Remark”PHP2”	
Nosepiece	Quintuple					
Focus system	Coaxial coarse/fine focus, with tension adjustable and up stop, minimum division of fine focusing is 2μm. Effective distance.11mm					
Condenser	Long working distance condenser, working distance: 70mm, and with pull board phase contrast unit					
Stage	Mechanical Stage, moving range 77mm (longitudinal)X112mm (transverse), detachable stage moving device					
	Culture dish holder	86mm (W)X129.5mm (L), optional with a circular culture dish Φ87.5mm				
		34mm (W)X77.5mm (L), optional with a circular culture dish Φ68.5mm				
		57mm (W)X82mm (L)				
Phase-contrast condenser	Sliding phase contrast equipment ,center adjustable					

Illumination	9W LED,adjustble brightness
Filter	Frosted grass and blue filter
Accessory	hexagonal socket wrench (M4,M5)

# Diagram



# Dimensions

