

L3201



- L3201 Epi-fluorescent microscope is used for fluorescence microscope and transmitted bright field observation. It is equipped with no magnification spherochromatic aberration infinity plan achromatic fluorescent objectives and wide field eyepieces, has clear and high contrast picture in your wide view field. The main body design meets with the ergonomics needs and makes you feel comfortable and relaxed in process of operation. It is the ideal instrument in biology, cytology, oncology, genetics, immunology etc. It also can be used in scientific research, universities, medical treatment, epidemic prevention etc.
- **Features**
 - ▲ Adopt infinity optical system and modularization function design.
 - ▲ Equipped with infinity plan achromatic fluorescent objectives, enable obtain more clearer and brighter image.
 - ▲ Wide-field plan eyepieces: field number $\Phi 22\text{mm}$.
 - ▲ Coaxial coarse/fine focus system, with tension adjustable and limit stopper, minimum division of fine focusing: $2\mu\text{m}$
 - ▲ Transmitted illumination system: Integrated field diaphragm and 6V30W halogen lamp, adding radiator and brightness control.
 - ▲ Epi-illumination system: 100W/DC mercury lamp. The voltage of power supply is 220V or 110V.
 - ▲ Trinocular can be observation for eyepieces and microphotography in 100% light flux, suits for low illuminance microphotography

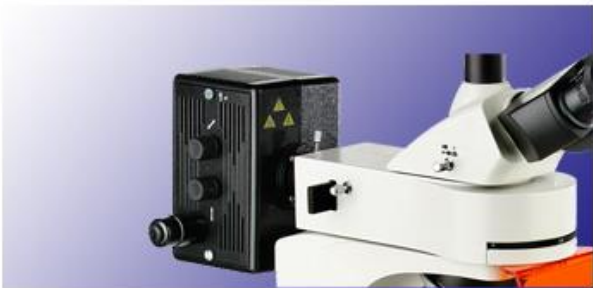


Observation System

Binocular, single diopter adjustment, inclined 30° , comfortable & good-looking. Trinocular can be connected to the camera. 10X wide field plan eyepiece, field $\Phi 22\text{mm}$, can provide an expanse and smooth space for observation.

Reflected fluorescence Illumination System

Turnplate reflected fluorescence observation set provides four fluorescence filter system as UV, V, B and G. This kind of frame can make it switch fleetly between each fluorescence system. 100W mercury lamp can provide ample illumination for fluorescence observation.



Built-in field diaphragm, center adjustable, is good for the control of field range.



Transmitted illumination system

The illumination system with 6V 30W halogen lamp (brightness adjustable) can provide clear and bright image for light field observation, but also for phase contract observation. The system also includes the collector with field diaphragm.

Function spread

By adding the appurtenance of phase contract unit and camera observation unit, it can spread to manifold modes for observation that satisfy the need to different research work.

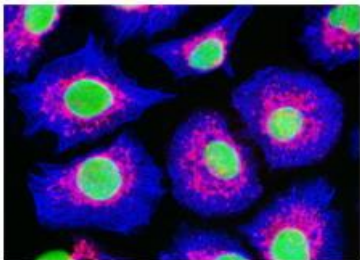


Camera observation unit

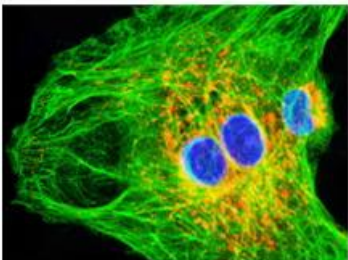


Phase contract unit

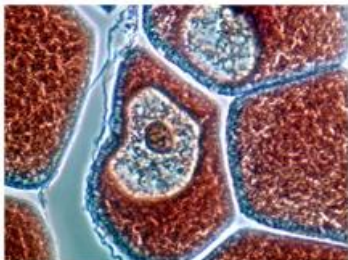
Digital camera photography:



Fluorescent observe



Fluorescent observe



Phase observe

Specification

Standard Configuration

Model	L3201
Eyepiece	Wide field WF10X(φ22mm)
Objective	Infinity plan achromatic objectives
	PL 4X/0.10 (Work distance) : 19.8 mm
	PL 10X/0.25 (Work distance) : 5.0 mm
	PLF L40X/0.85spring(Work distance) : 0.42mm(No magnification spherochromatic aberration)
	PL 100X/1.25(Spring, oil) (Work distance) : 0.36mm
Eyepieces tube	Trinocular, Inclination of 30°.
Epi-fluorescent illumination system	Power supply unit, 110V or 220V can be selected.
	Mercury lamp is 100W/DC
	Turnplate Epi-fluorescence illuminator (UV.V.B.G filters system)
Focus system	Coaxial coarse/fine focus system, with tension adjustable and limit stopper, minimum division of fine focusing: 2μm.
Nosepiece	Quintuple(Backward ball bearing inner locating)
Stage	Double layer mechanical (Size:210mmX140mm,movingrange:75mmX50mm)
Transmitted illumination system	Abbe condenser NA.1.25 Rack & pinion adjustable
	Blue filter and Ground glass
	Collector for halogen lamp illumination and integrated field diaphragm
	6V 30W halogen lamp, adjustable brightness

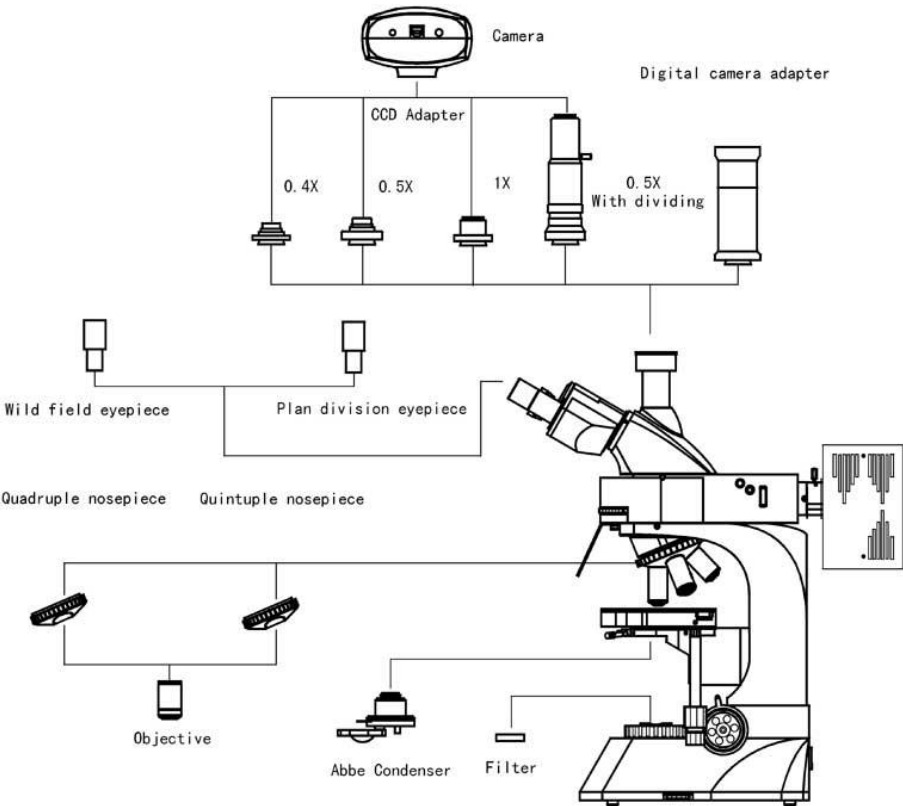
Optional accessories

Name	Sort/Technique parameter	NO.
Eyepiece	Dividing eyepiece(field number:φ22mm) 0.10mm/Div	1122010
Objective	Infinity plan achromatic objective PL 60X/0.80(Work distance) : 0.46 mm	2060160
	Infinity plan achromatic fluorescent objective PL FL10X/0.35(Work distance) : 2.37 mm	2610110
Filter	Green filter	115002
	Yellow filter	115003
CCD adapter	0.4X	810001
	0.5X	810004
	1X	810002

	0.5X with dividing 0.1mm/Div	810003
Camera	DV-1 Video output(380/520 TV line) USB output(0.42 M pixel)	800001
	DV-2 With USB output (1.3M,2.0M,3.0M pixel)	800003
	DV-3 With video output(380/520 TV line)	800005
Digital camera adapter	CANON(EF) NIKON(F)	820001

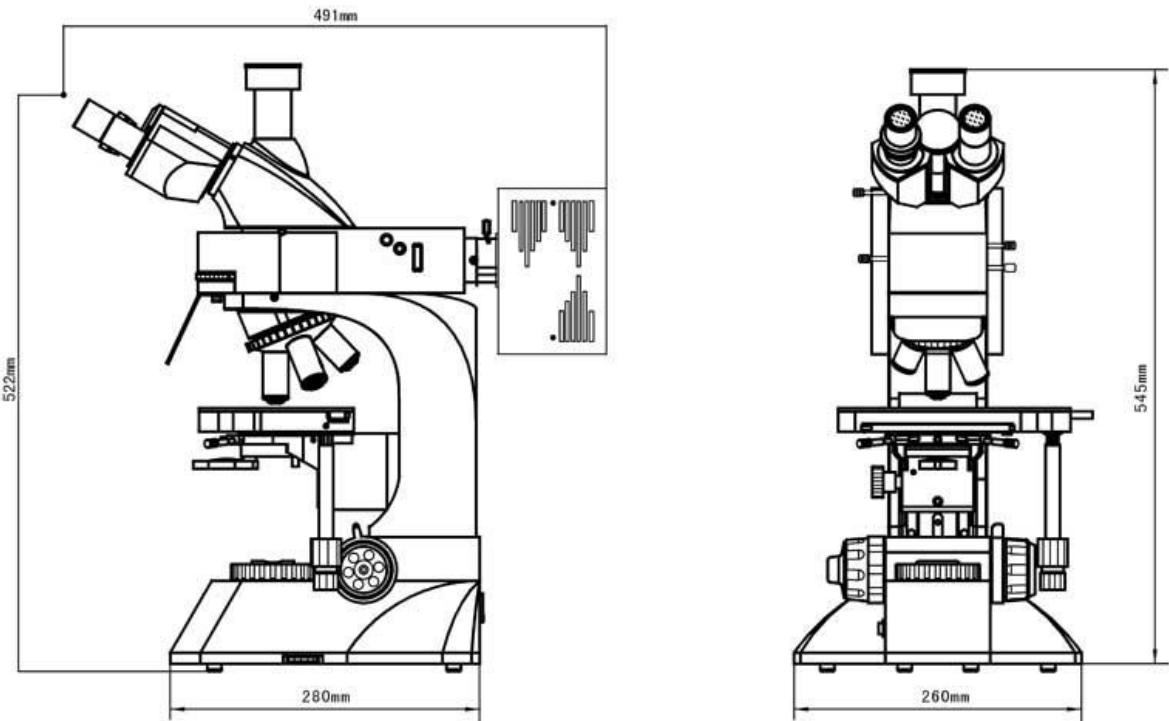
•

Diagram



•

Dimensions



•