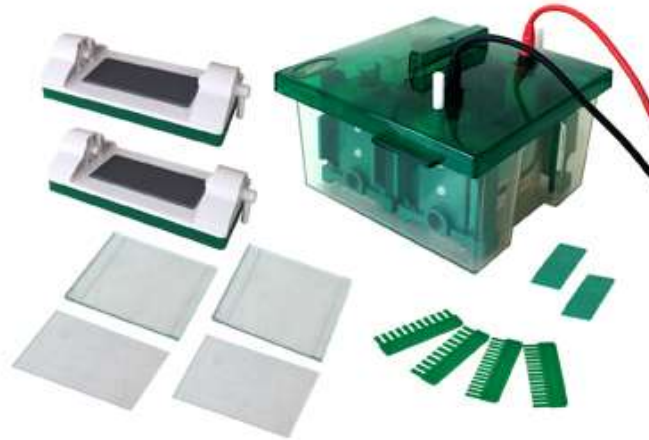


JY-Mini-P4 Vertical Mini Protean Electrophoresis Cell



Technical specifications

Glass plate size (W×L) : 101×82 mm

Gel Size (W×L) : 81×73 mm

Gel thickness: 1.0 (mm)

Gel amount: 1~4 (pieces)

Sample volume: 11~60

Buffer Volume: ~1200ml

Dimension (L×W×H) : 175×175×100mm

Net weight: 2.5 (kg)

Characteristic feature

With two gel castings, can cast 1-4 plates of gels at the same time.

- The installation of the glass plate in just 15 seconds, and does not need the knob, fast and convenient.
- With the gel casting in the original position, no need to move glasses from gel making to electrophoresis running. It is more convenient to observe gel preparing through both sides of the glasses.
- With the background color, making it easy to observe sample loading and electrophoresis running.
- With the protective strip of the positive electrode, it can prevent producing bubbles and also protect platinum silk from damage.
- Abundant buffer not only guarantees cooling effects but also keeps the pH Value stable during the whole experiment process.
- Auto-switch-off when the lid is removed.