

XJL-302DIC



- **XJL-302 DIC** differential interference contrast microscope is suitable to observe many different kinds of object. It is equipped with transmitted illuminator and reflected DIC system, infinity plan achromatic objectives with long working distance, wide-field eyepieces, and polarizer device. It provides the clear and 3D image, beautiful sculpt, convenient control, etc. It is the ideal instruments in research work in biology, metallography, mineralogy, precision engineering, electronics, etc.



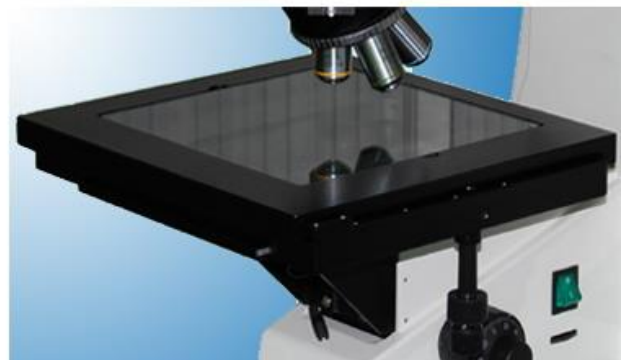
Observation system

The gemel mode trinocular is inclined 30 degree. The operator cervix and shoulder are released from tired in period of time keeping bow or head-up.

The eyepiece field of view number is Φ 22mm and eyepatch can be added.

Mechanical Stage

The large-mobile range mechanical stage is adapted to observation big size specimen or quick check. The size of stage is 280mmX270mm and moving range: 204mmX204mm.





Illumination System

Integrated illumination can make up the difference of halogens by adjusting the spacial position..

The illumination mode is “Kohler illumination” and the adjustment of field and aperture diaphragm is achieved by turning the control plate, the adjustment mode is

smooth and comfort. Fully taken into account the cooling effect of illumination system so that the surface temperature of lamp house is lower, the operation is safer. Simpler and quicker way to replace the bulb without any tools.

DIC observation

Equip high quality DIC objectives and DIC observation system., in ord to show the clear , porfile salint and 3D embossed image.

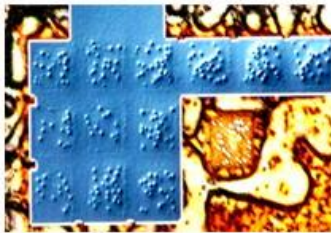


Camera observation unit

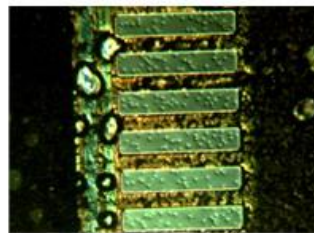
Photography Unit

This unit enable equip the 0.5X/1X CCD adapter, digital camera adapter (C/CS) and SLR digital camera adapter. Microphotography in 100% light flux, suits for low illuminance microphotography.

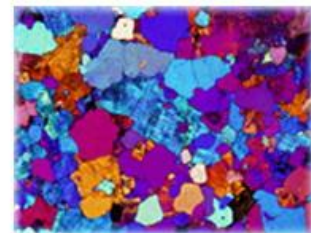
Digital camera photography:



DIC observe



DIC observe



Polarized observe

Specification

Standard Configuration

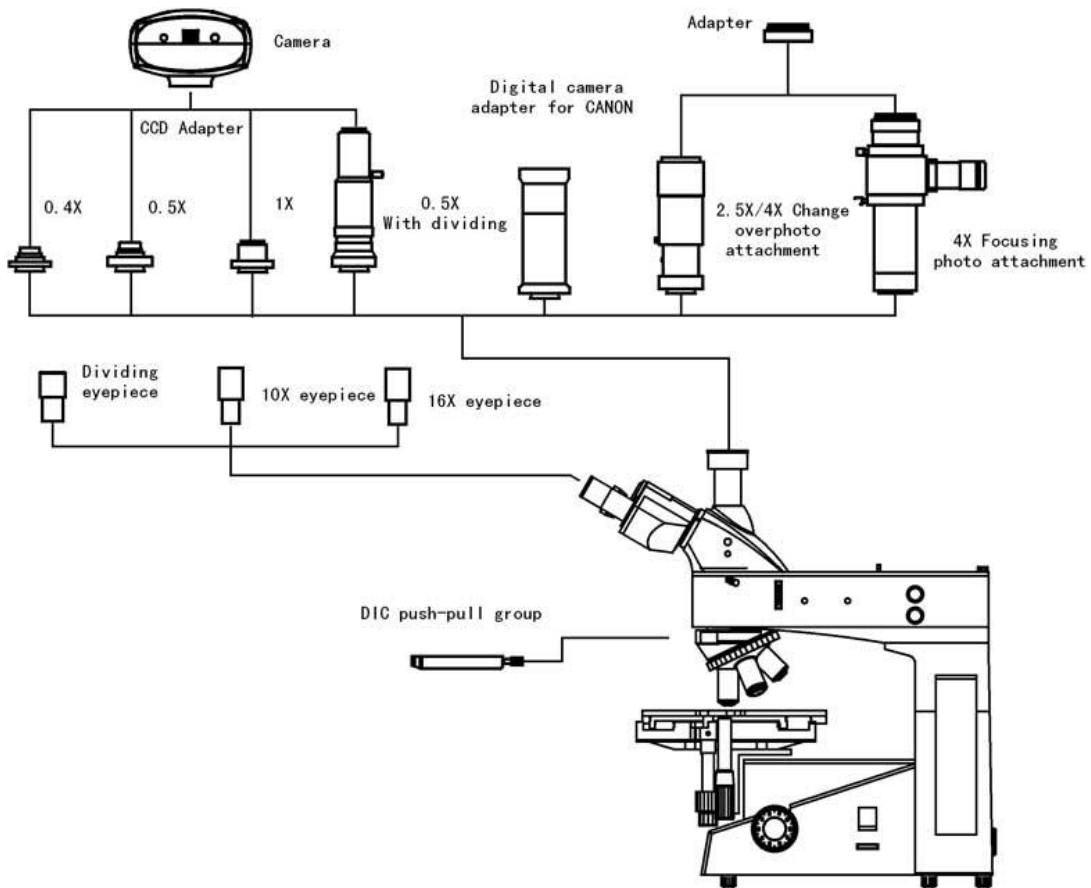
Eyepiece	SWF 10X Wide-field plan achromatic eyepiece field of view number Φ 22mm					
Objective (Infinity and long working distance plan achromatic objective)	Type	Magnification	Number aperture	Working distance (mm)	Thickness of cover glass (mm)	Remark
	Bright Field objective	LMPlan5X	0.12	18.2	0	XJL-302DIC
		LMPlan10X	0.25	20.2	0	
		LMPlan20X	0.35	6.0	0	
		50X	0.70	3.68	0	
80X		0.80	1.28	0		
Eyepiece tube	Inclination of 30° and interpupillary distance is 53~75mm					
Focusing system	Coaxial coarse/fine focus, with tension adjustable and up stop minimum division of fine focusing: 0.8 μ m					
Nosepiece	Quintuple (Backward ball bearing inner locating)					
Stage	Mechanical stage size : 280mmX270mm moving range: 204mmX204mm					
Polarization Unit	Polarizer enable 360° to rotate and switched in or out					
	Analyzer can be switched in or out					
Light source	12V50W halogen, brightness enable control					
DIC observation system	Suitable to 5X/10X/20X objective					

- **Optional accessories**

name	Sort/Technique parameter				NO.
Eyepiece	Dividing eyepiece(field number: Φ 22mm) 0.10mm / Div				1121010
Objective	Magnification	Number aperture	Working distance (mm)	Remark	
	40X	0.60	3.98	Bright field	2260140
	60X	0.70	2.08		2260160
100X(Dry)	0.85	0.40	2260111		
Stage	Mechanical stage, size: 250mmX230mm, moving range:154mmX154mm				040018
CCD adapter	0.5X				812004
	1X				812002
	0.5X with dividing 0.1mm/Div				812003

Camera	DV-1(with USB and Video output)	800001
	DV-2(with USB output)	800003
	DV-3(with Video output)	800005
Digital Camera Adapter	CANON(EF) NIKON(F)	820001

Diagram



Dimensions

